

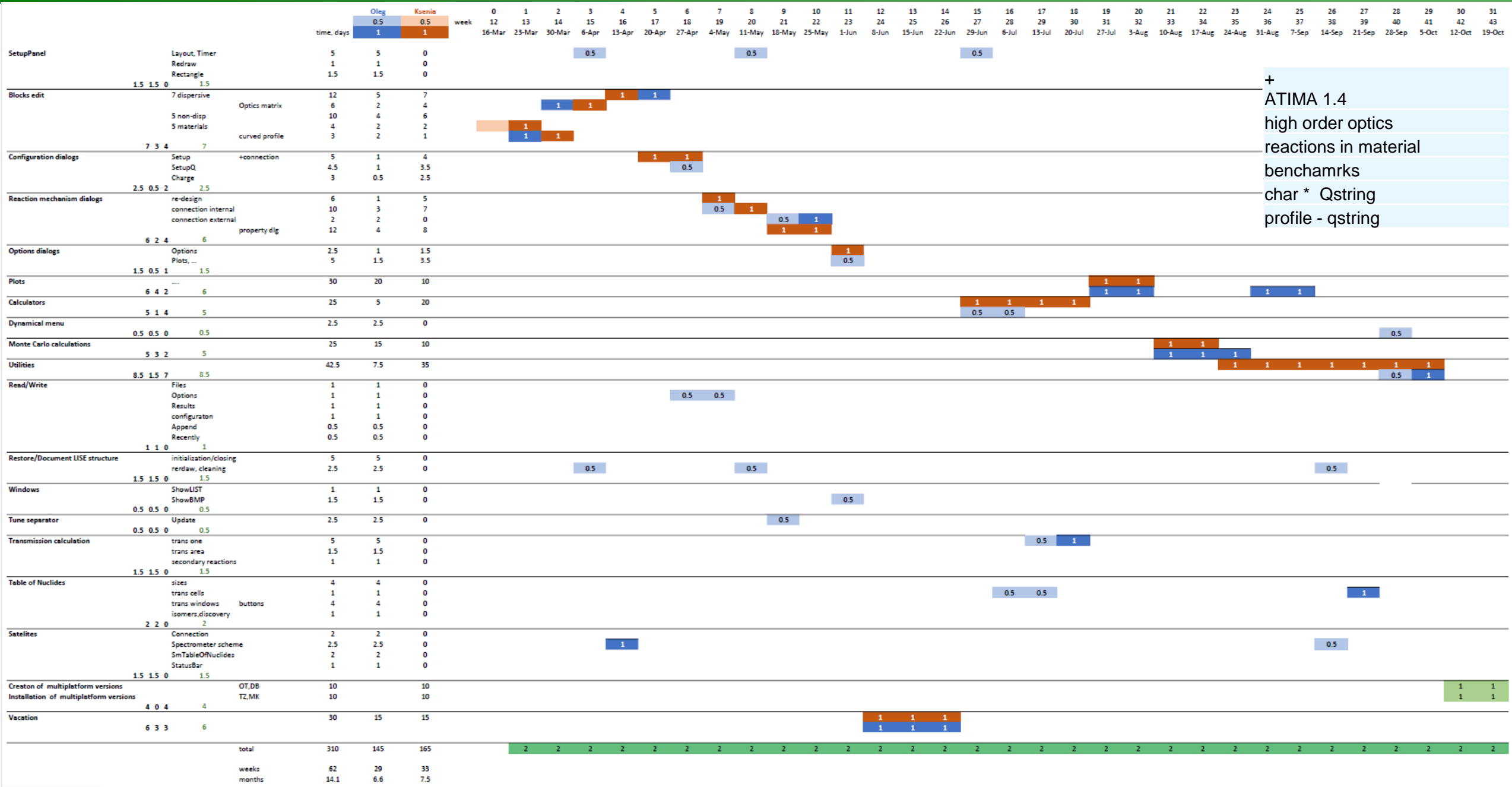
1. Heritance of LISE⁺⁺ window classes
2. Monthly results
3. LISE⁺⁺ cute in action
4. Dialog scheme (completion status)
5. Porting schedule

1. daytime: Ksenia works on porting (Oleg – research and meeting time)
2. Ksenia & Oleg 6-9PM -- working jointly to update Ksenia's results, to discuss problems, results and plans
3. nighttime: Oleg works on porting
4. then (by Oleg)
 - * updates modification on Ksenia's computer
 - * upload a new version in onedrive cloud
 - * send LISE⁺⁺ porting status

all new LISE-Qt versions are uploaded **DAILY** in the next folder
https://1drv.ms/u/s!Aj8_a9I2zt5kivsKcdzVsKNRZjuzOw?e=a7odiu



LISE porting preliminary schedule (then "LISE core" step)



+
 ATIMA 1.4
 high order optics
 reactions in material
 benchmrks
 char * Qstring
 profile - qstring