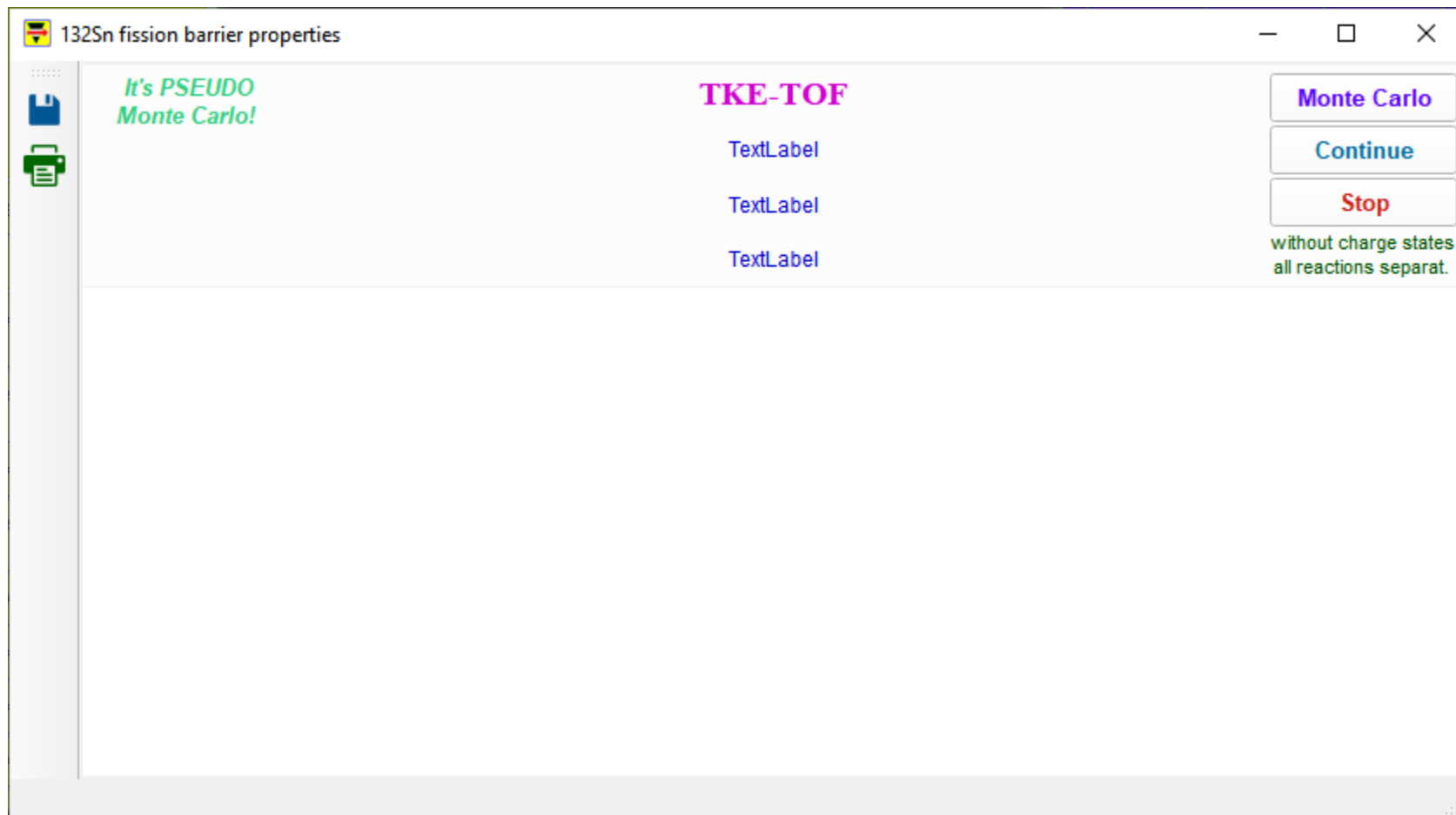


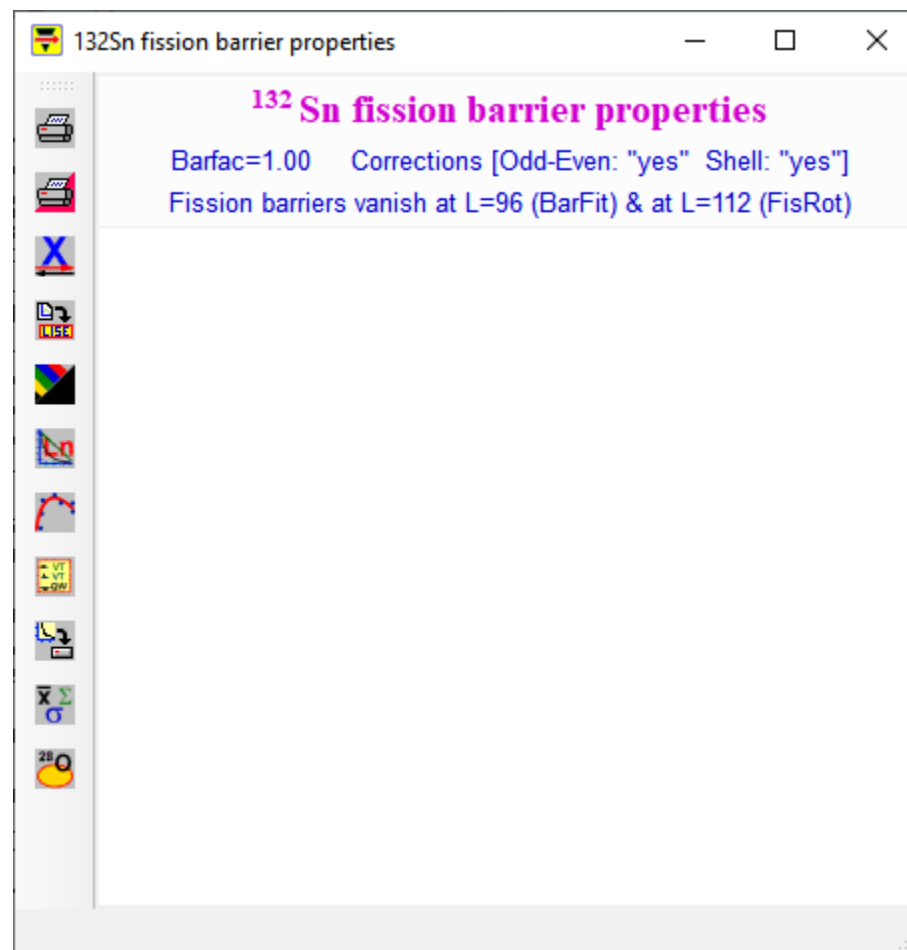
## Working on Graphics!

```
//-----
// 14.15.2 09/19/20
// working on Graphs
// 106 Graph calls were changed for QWidget=nullptr
// TGraph class now is QMainWindow
// new function QString QStrNoBucks(const QString &src)
```

```
//-----
// 14.15.3 09/20/20
// plots connection (93 plots done)
// TGraph class layout
// classes c_Graph, c_Plot : ~ 10%
```



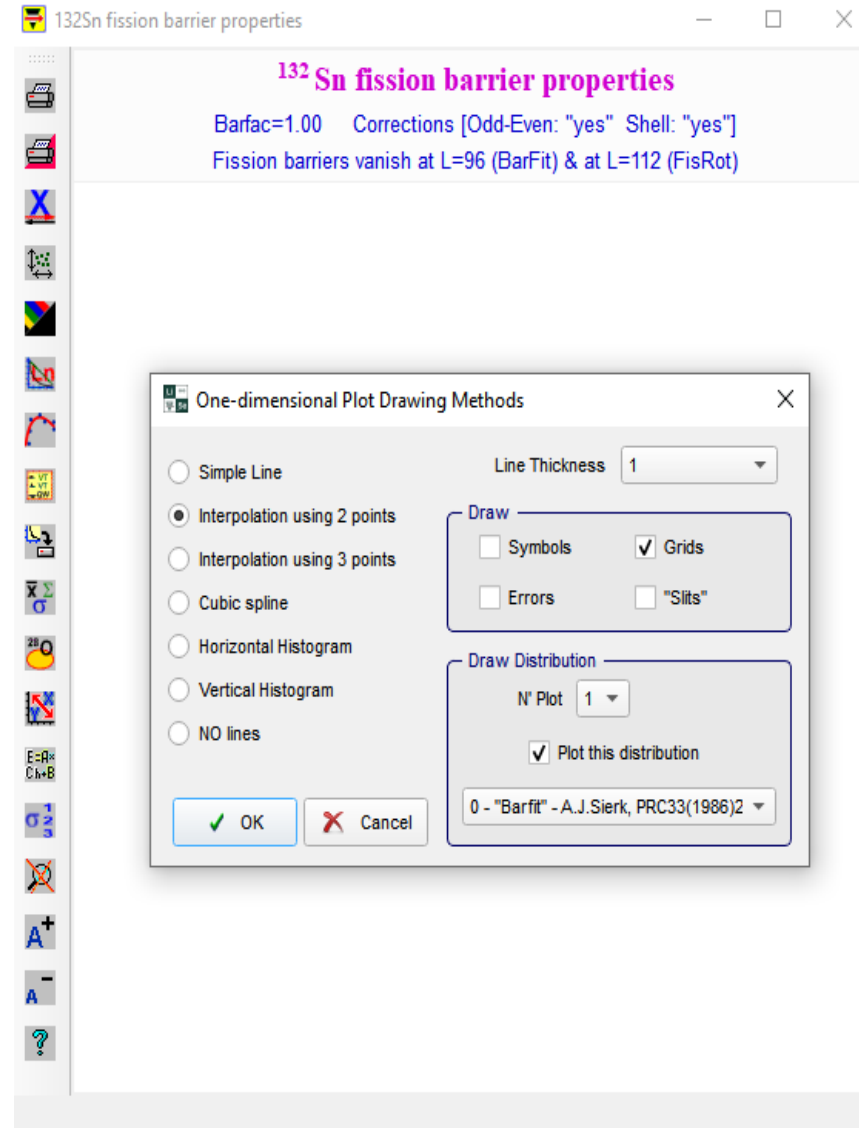
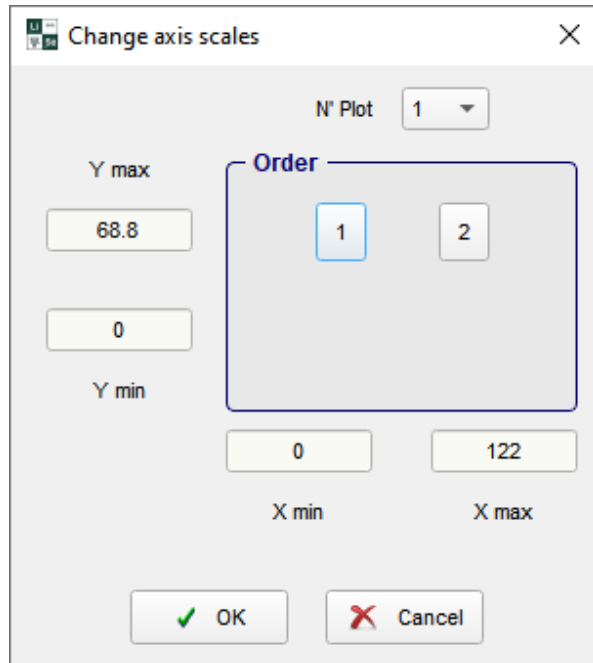
//-----  
// 14.15.4 09/21/20  
// plots connection (100 plots done)  
// TGraph -> ToolBar  
// Actions (signal/slot) : 60%



```
//-----
// 14.15.5 09/22/20
// plots connection (103 plots done)
// c_Plots/Dialogs/d_Methods update for complete operation
// c_Plots/Dialogs/d_Axis_change update for complete operation
// c_Plots/Dialogs/d_Plot_sigma update for complete operation

// Implementation of c_Graph_MC from Borland to Qt: adaptation 10%

// TGraph -> ToolBar -> Actions (signal/slot) : 100% DONE!
```



```
private slots:
    void    CmPrintHalf();
    void    CmPrintWhole();
    void    CmSetAxis();
    void    CmInvertXY();
    void    CmDoDifferentColor();
    void    ChangeLogLin();
    void    CmMethods();
    void    CmSavePlot();
    void    CmSet();
    void    CmSecReact();
    void    CmStatistics();
    void    CmFillCircle();
    void    CmInvertAxis();
    void    CmContour();
    void    CmProjection();
    void    CmShowMCtransmission();
    void    CmCalibration();
    void    CmSavePlotMC();
    void    CmSigma();
    void    CmGamma();
    void    CmTableOfNuclides();
    void    CmScaleEdit();
    void    CmSaveFileBiResult();
    void    CmZoomPlus();
    void    CmZoomMinus();
    void    ClearZoom();
    void    CmHelp();

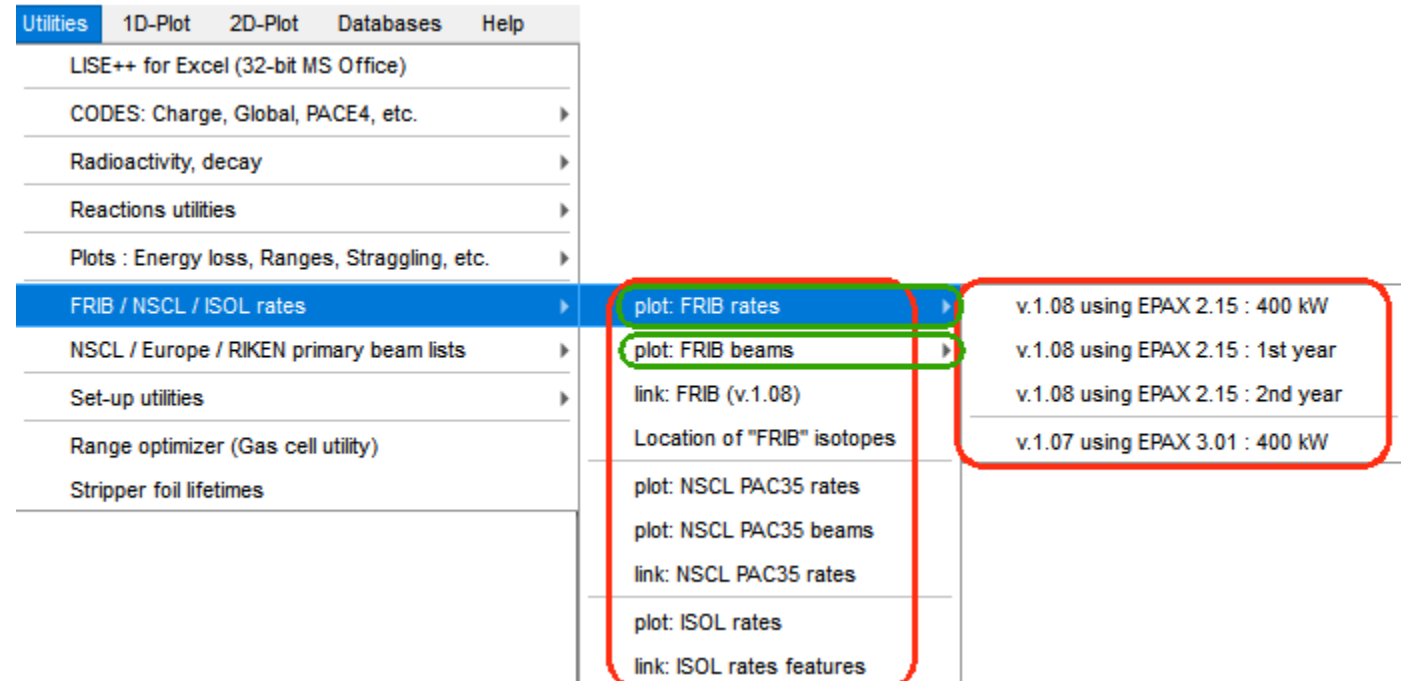
public slots:
    void    CmDoLegend();
    void    CmIdent();
```

```
//-----
// 14.15.6 09/23/20
// Menu FRIB/NSCL/ISOL rates adaptation of Borland v.12 (initially
// was v.10)
// signals creation and connection : 100% DONE!

// working on c_Graph & c_Plot : ~10-20%

// [3] EPAX 2.15 user -- edit and save format changed (dialog, file)

// w_Show_transMC.* adaptation of Borland v.12 to Qt : ~20%
```



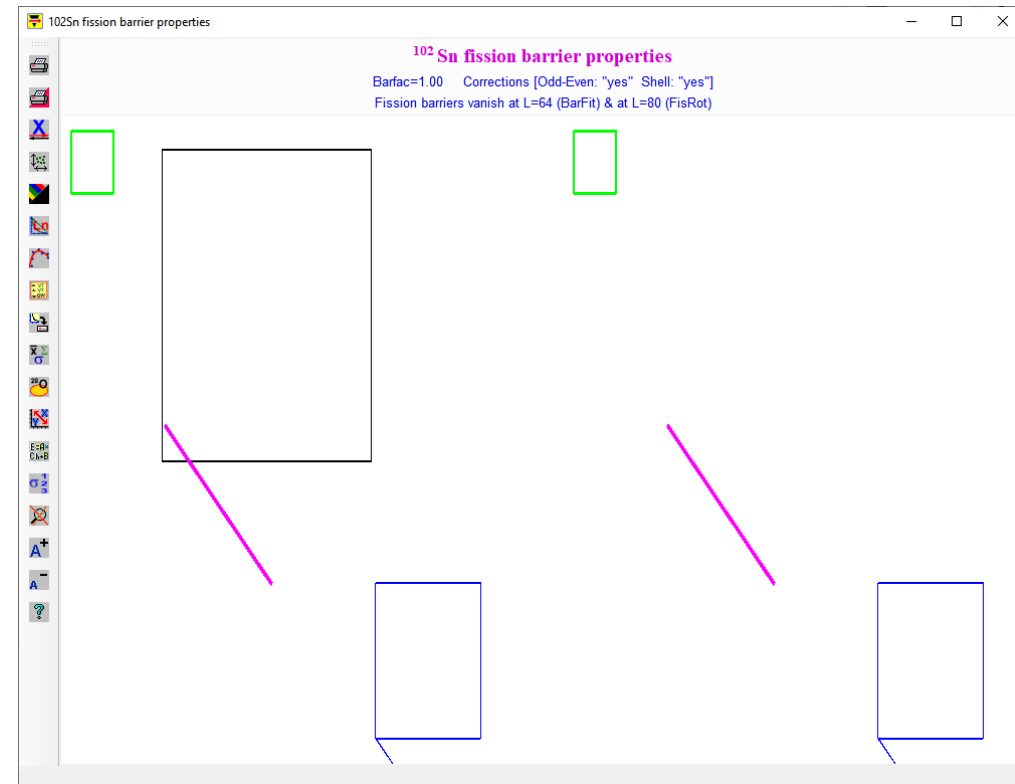
Utilities	1D-Plot	2D-Plot	Databases	Help
LISE++ for Excel (32-bit MS Office)				
CODES: Charge, Global, PACE4, etc. ▶				
Radioactivity, decay ▶				
Reactions utilities ▶				
Plots : Energy loss, Ranges, Stragglng, etc. ▶				
<b>FRIB / NSCL / ISOL rates ▶</b>				
NSCL / Europe / RIKEN primary beam lists ▶				
Set-up utilities ▶				
Range optimizer (Gas cell utility)				
Stripper foil lifetimes				

plot: FRIB rates ▶	v.1.08 using EPAX 2.15 : 400 kW
plot: FRIB beams ▶	v.1.08 using EPAX 2.15 : 1st year
link: FRIB (v.1.08)	v.1.08 using EPAX 2.15 : 2nd year
Location of "FRIB" isotopes	v.1.07 using EPAX 3.01 : 400 kW
plot: NSCL PAC35 rates	
plot: NSCL PAC35 beams	
link: NSCL PAC35 rates	
plot: ISOL rates	
link: ISOL rates features	

```
//-----
// 14.15.7 09/24/20
// plots connection (106 plots done)
// working on c_Graph & c_Plot : ~12-22%

//-----
// 14.15.8 09/25/20
// plots connection
// working on c_Graph & c_Plot : ~14-25%
// learning transfromMatrix for QGraphicsView and QGraphicsItem
```



# Porting schedule

		week	0	25	26	27	28	29	30	31	32	33	34	35	36	37	38	39	40	
		week	12	37	38	39	40	41	42	43	44	45	46	47	48	49	50	51	52	
		day	16-Mar	18-Sep	25-Sep	2-Oct	9-Oct	16-Oct	23-Oct	30-Oct	6-Nov	13-Nov	20-Nov	27-Nov	4-Dec	11-Dec	18-Dec	25-Dec	1-Jan	
<b>SetupPanel</b>	Layout, Timer																			
	StatusBar									0.1	0.1	0.1	0.1							
<b>Plots</b>	Graphics				1	1	1	0.4												
	Connection	6 4 2		1	1	0.5	0.5	0.5	0.5	0.5										
	Benchmarks							0.5	0.5	0.5	0.5									
<b>Dynamical menu</b>									0.5	0.2										
		0.5 0.5 0			0.7															
<b>Monte Carlo calculations</b>	Graphics							0.4												
	Benchamrk	5 3 2						0.2												
<b>Read/Write</b>	Files																			
	Options Results configuraton Append									0.1	0.2									
<b>Restore/Document LISE structure</b>	initialization/closing																			
	rerdraw, cleaning																			
<b>Tune separator</b>	middle brho									0.2										
<b>d_CN -- table of isotopes</b>	benchamrks					0.5	0.5													
<b>Table of Nuclides</b>	sizes											0.1	0.1							
<b>Application size (adaptation to HDPI)</b>												0.1	0.1	0.1						
<b>correction and updates list</b>												0.1	0.2	0.2						
<b>remake WinHelp links</b>												0.1								
<b>HighOrderOptics &amp; ReactionInMaterial</b>				1																
<b>ATIMA 1.4</b>									0.5											
<b>LIBRARIES, Codes (Charge _)</b>												0.1	0.3							
<b>New version - html access</b>												0.2								
<b>dialog About</b>												0.2								
<b>Creaton of multiplatform versions</b>																				
<b>Installation of multiplatform versions</b>																				
<b>benchmarks</b>												0.5	1	1						
<b>char * -- &gt;Qstring</b>												0.2	0.2	0.6						
<b>Profile</b>																				
			2	2	2	2	2	2	2	2	2	2	2	?	?				Ksenia	Oleg

this week

next week