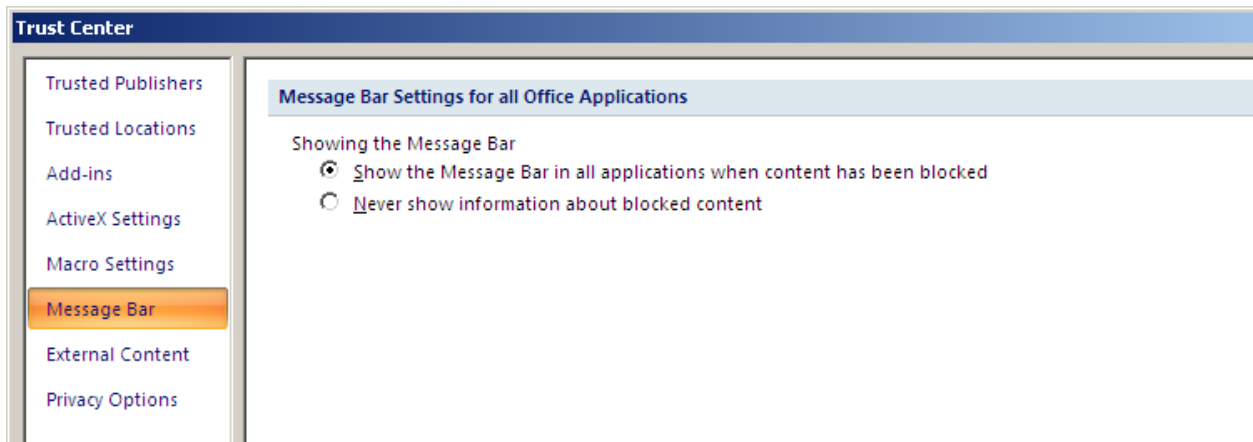
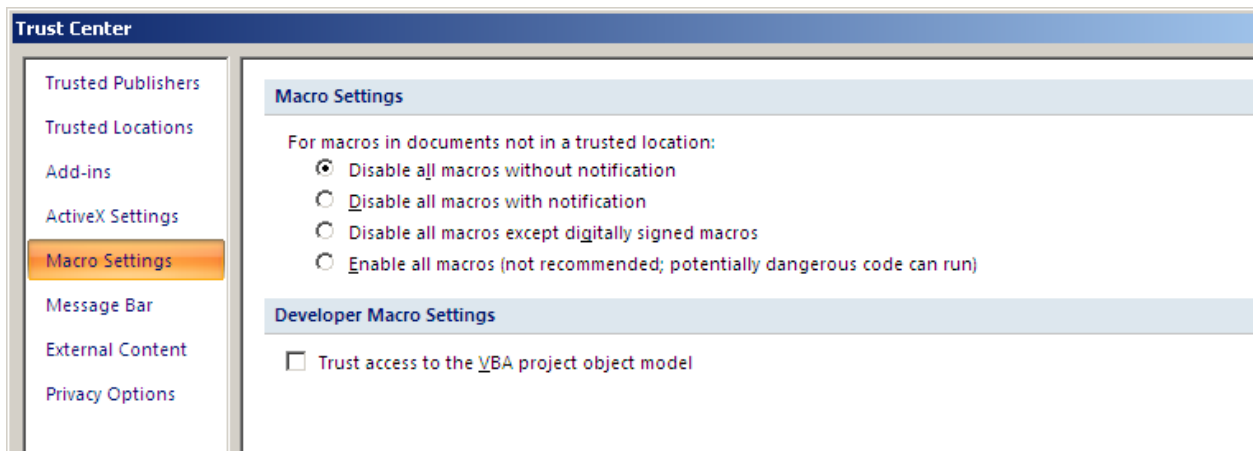


**Excel2007 Macro-file is
available in the LISE++ package**

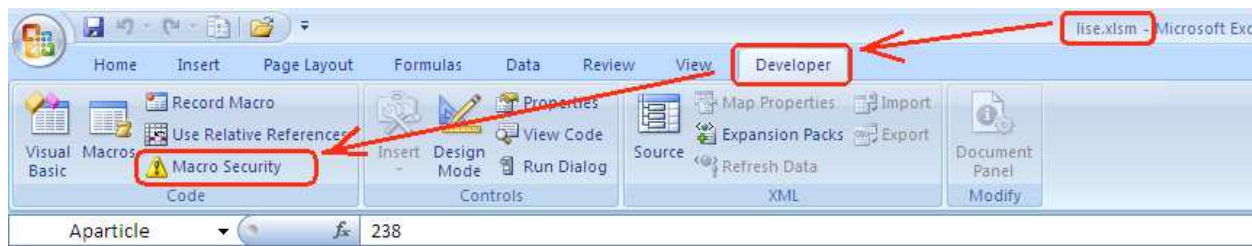
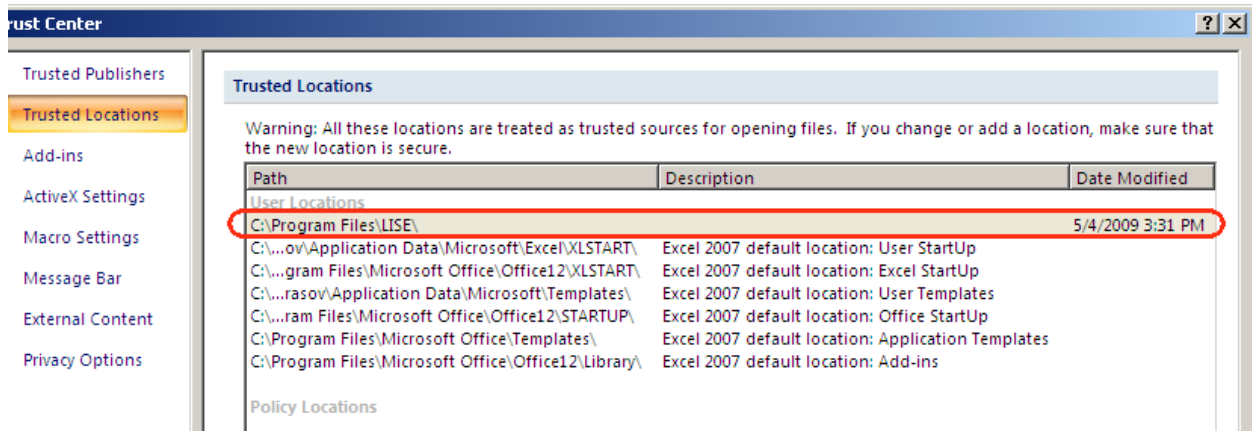
Set the Message Bar settings to see and have a possibility to turn on/off manually if



If macro settings option are set as following



I think that the easiest way is set the LISE directory as trusted location.



<p>Energy loss calculation method</p> <p>0 - Hubert</p> <p>1 - Ziegler</p> <p>2 - ATIMA</p> <p>current state = 2</p>	<p>Charge State calculation methods</p> <p>0 - Winger</p> <p>1 - Leon</p> <p>2 - Shima</p> <p>3 - Global+Winger</p> <p>4 - Global+Leon</p> <p>5 - Schiwietz (solid)</p> <p>current state = 3</p>	<p>Energy Straggling calculation methods</p> <p>0 - Anne</p> <p>1 - ATIMA</p> <p>current state = 1</p>	<p>names</p> <p>Zparticle= 92 U</p> <p>Aparticle= 238</p> <p>Ztarget= 14 Si</p> <p>Atarget= 28</p> <p>Energy= 300 MeV/u</p> <p>Thickness= 1 mg/cm2</p> <p>ZmQ= 0</p> <p>you may change values of top cells</p>
<p>Init Hide</p>			

function	return	parameters	example	
Energy After Matter	Residual energy in MeV/u	Zparticle, Aparticle Energy [MeV/u] Ztarget, Thickness [mg/cm2]	299.897	MeV/u
Energy After Matter with option	Residual energy in MeV/u	Zparticle, Aparticle Energy [MeV/u], Ztarget Thickness [mg/cm2],option	299.90	MeV/u

And LISE for Excel2007 works perfect!

